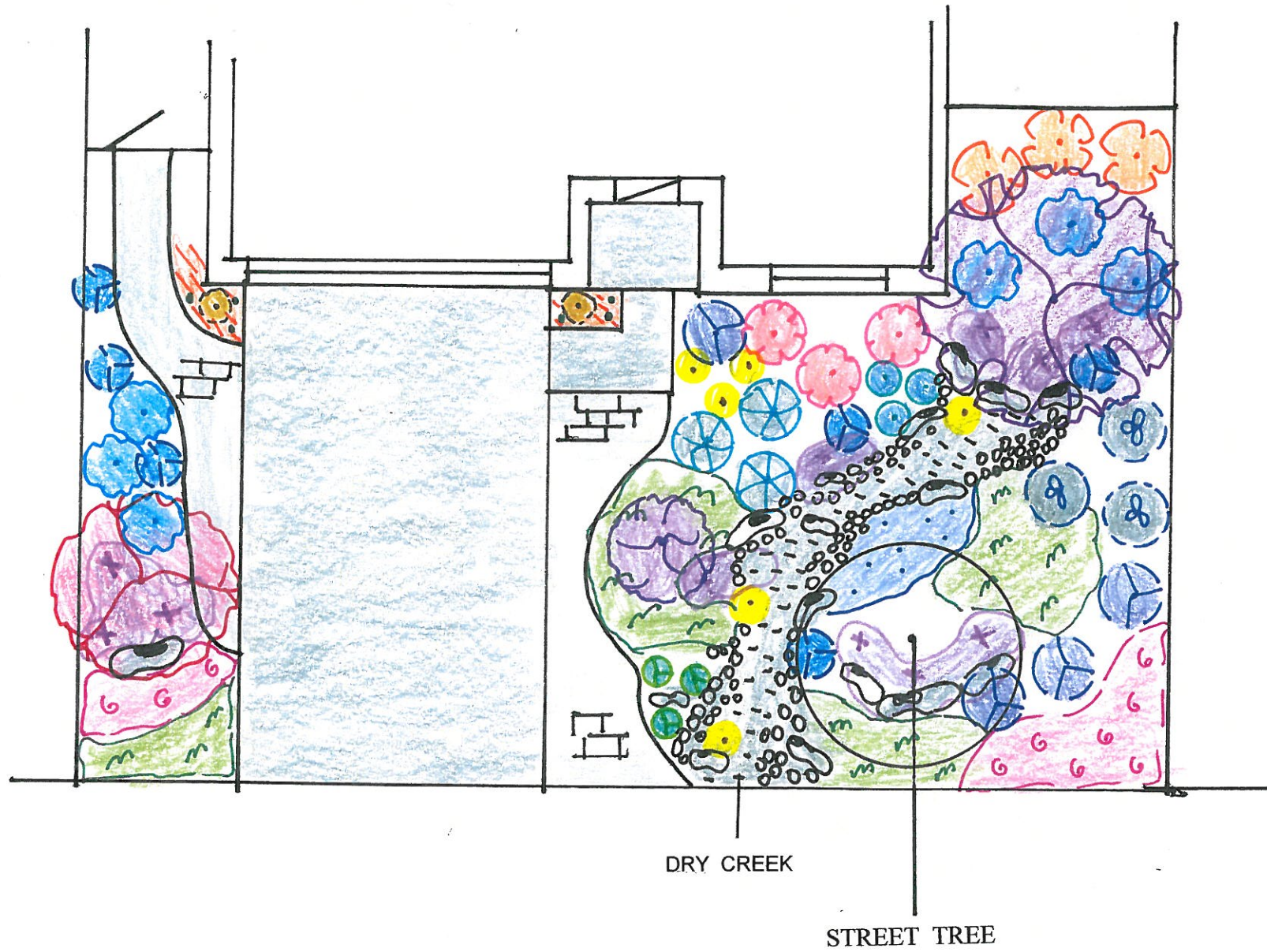


**Dry Creek Theme.**

The main feature of this front yard design is the dry creek theme. The dry creek is permeable. It is surrounded by low water use plant material with a top dressing of bark to reduce evaporation. Pavers also provide an additional permeable surface with efficient foot traffic. This garden with a landscaped area of 1,030 square feet requires about 8,652 gallons of irrigation water per year in the San Benito County area. A landscape of the same size with high water use plant material would require an addition 15,020 gallons of water.



**PLANT LEGEND**

KEY	BOTANICAL NAME	COMMON NAME	QUANTITY	SIZE
<b>TREE</b>				
	LAGERSTROEMIA I. 'WATERMELON RED'	GRAPE MYRTLE	1	5 GAL
	ROBINIA X AMBIGUA	PURPLE ROBE	1	5 GAL
<b>SHRUB</b>				
	CEANOTHUS GRIS. HORI. 'CARMEL CREEPER'	CARMEL CREEPER	6	1 GAL
	'CEANOTHUS 'JULIA PHELPS'	JULIA PHELPS CEANOTHUS	1	1 GAL
	NERIUM PETITE PINK	PETITE PINK OLEANDER	3	1 GAL
<b>PERE.</b>	<b>PERENNIAL</b>			
	ARTEMISIA 'SILVER MOUND'	ARTEMISIA	3	1 GAL
	CONVOLVULUS CNEORUM	BUSH MORNING GLORY	3	1 GAL
	LANTANA SELLOWIANA PURPLE	TRAINING LANATANA	11	1 GAL
	LAVENDULA VERA	ENGLISH LAVENDER	4	1 GAL
	PHLOMIS FRUTICOSA	JERUSALEM SAGE	3	1 GAL
	SISYRINCHIUM HELLUM	BLUE-EYED GRASS	8	1 GAL
	TULBAGHIA VIOLACEA VAR.	SOCIETY GARLIC	3	1 GAL
<b>GR. CV.</b>	<b>GROUND COVER</b>			
	MYOPORIUM PARVIFOLIUM	MYOPORIUM	18	1 GAL
	OSTEOPERMUM FRUTICOSUM	AFRICAN DAISY	10	1 GAL
<b>OR. GR.</b>	<b>ORNAMENTAL GRASS</b>			
	CAREX ALBULA	FROSTY CURLS SEDGE	4	1 GAL
	HELICTOTRICHON SEMPERVIRENS	BLUE OAT GRASS	6	1 GAL
<b>SUCC.</b>	<b>SUCCULENT</b>			
	AEONIUM ARBOREUM	AEONIUM	2	1 GAL
	ECHEVERIA SECUNDA GLAUCA	HENS AND CHICKS	6	4 INC
	SEDUM X 'AUTUMN JOY'	SEDUM X 'AUTUMN JOY'	3	1 GAL
	SEDUM SPURIUM 'DRAGON'S BLOOD'	SEDUM 'DRAGON'S BLOOD'	2	6-PAK
<b>HRDS.</b>	<b>HARDSCAPE</b>			
	BARK			
	PAVERS			

DRY CR.	DRY CREEK	ELEVATION
	GRAVEL	-6"
	4"-6" DIAMETER COBBLE	LEVEL TO +12"
	BOULDER	LEVEL TO +12"+

LANDSCAPE DESIGN BY ROSEMARY BRIDWELL CCN, IA  
SCALE: 1/8" = 1 FT